



Energetic Wellness  
School of Naturopathy

*BIONETIC NATUROPATHY*  
*AND THE GERMAN NEW MEDICINE*



The Dawn of a New Medicine

“I want to guide you to an understanding of  
diseases, free of fear and panic.”

Dr. Med. Ryke Geerd Hamer

## *What is the Cause of Disease?*

- Congestion of Blood/Lymphatics/Flow
- Stress - Emotional Low-Grade Energy Drains (loss) – Lack of Happiness (heart)
- Geopathic Stress/ Noxious Energy
- Malnutrition / Denatured Foods (Fat Ratios) 3/6/9
- Toxicity (Poisoning)/ Lymphatic Drainage
- Genetic (< 4% or less)
- Structure - Bio Energy (Bones/Ligaments/Muscles/Connective Tissue)
- Lack of Gravity (Lack of Exercise) - Piezo Electrical Functions
- Injuries - Body or Brain
- Emotional Shock Conflict - Traumas
- Nervous System
- EM Imbalance (Frayed Nerves) - Vagus Nerve
- Overactive/Under-active Fight or Flight
- Limited Recovery Phase Remains CA (expression goes latent) until resolution
- Lack of Balance - No Rest/Repair
- Act React vs. Respond
- Loss of Hope

## *Do germs cause disease?*

Pasteur vs. Bechamp

**Pasteur: \*Germ Theory Origin**

1. Admitted his theory was false before his death.
2. Significant evidence Pasteur falsified his research.

**Bechamp**

1. Work refutes Pasteur and states microbes are beneficial, useful, and have biological meaning to man.
2. **Enderline** proves **Pasteur** incorrect and validates **Bechamp** with the “pleomorphism” concepts.

## *What is the reason for microbes (microzyma)?*

- To compost organic matter back to the soil.
- To help man to heal.
- Biological programs playing out in body set forth by the brain mediating between the psyche and the body.

## *Dr. Ryke Geerd Hamer*

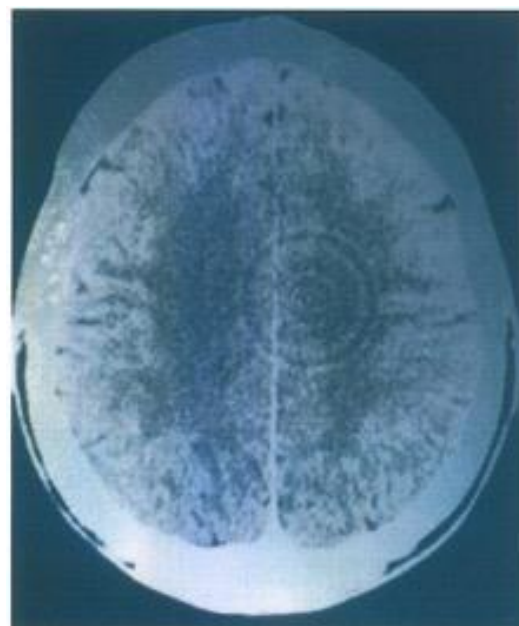
In 1979, shortly after his son's unexpected death, Dr. Hamer was diagnosed with Testicular Cancer. A light went on after reading works by another **German Physician: Wilhelm Reich** discussing the oncogenic philosophy of cancer and TB being present at the site that has repaired or is in the process. This philosophy is extremely mind boggling– that the microbiome supports the physiology in a unique way that is beyond anything he had thought. TB is used to “eat away” the tumor!

After many years of arduous and deep study, **German New Medicine** was born. It was ratified by thousands of CT scans showing electronic aberrations in the brain control centers related to the tissue of the cancer.

He discovered that all illnesses (diseases) are purposeful in aiding the body to adapt to specific situations. They follow the specific brain centers, but also interact with how the patient interpreted the shock or trauma.

The biological program was activated as a biological-physical (physiological response) to a surprising event.

This concept is beyond any kind of philosophy ever put forth in the medical models of health. It also supports many holistic processes of health recovery. Illness is a default resolution of the body to recover from the stress-shock response.



*It's not a fault in the stars; it is a process that we have misunderstood for centuries!*

Our customary concept of disease did not encompass the biological purposes of disease. Every disease comes from an unexpected shock experience (trauma), or **primal emotion**, that affects the **psyche** and makes a marked impact on the biology at the same time. This becomes visible on a brain CT scan in the part of the brain that corresponds biologically to the specific trauma, and the relay in the brain that controls those tissues is all based on the “meaning” of a person's psyche about this event. This is relevant only to the patient, but they seem to follow commonalities—breast for family/nest or partner, lungs for death fright, kidneys for abandonment, etc.

These all follow the type of trauma (the related tissue/brain aspect) in charge of the tissue. To create a biological program \*SBS, you have to have all three involved: strong emotion or toxic emotional shock, registration of the event by the psyche, and an assigned meaning as to what was interfered with. With breast health, if a woman loses her baby, the psyche may decide it's time to make the nipple stronger, so that the next baby can stay; it will have more “tissue” to hold onto.

The brain/psyche links to tissues that mean something. For example, liver for connection with others, gallbladder for staying out of conflict with others, and bladder for a safe place to pee. The meanings seem to be very basic and follow certain criteria.

## *The Triune Brain Governs All Tissues*



- Cortex - thoughts (including planning, language, logic, will, and awareness)
- Mid Brain, Limbic System - emotion (feelings, relationships, nurturing, images, dreams, and play)
- Cerebellum - movement and structure of the body
- Brain Stem - reptilian brain instinct (survival, breathing, swallowing, heart beats, and startle response) - PolyVagal Tone, etc.

Dr. Hamer is the first to prove scientifically that cancer, for example, is not - as previously thought - senseless proliferation of deadly cancer cells, systemic illness, and that the body is running out of control. Rather, the physiological changes are part of a [Significant Biological Special Program \(SBS\)](#) of nature that has been successfully practiced for millions of years of evolution. This is adaptation to shock and trauma at its best!

### *SBS*

The special biological program for this particular conflict is switched on immediately after the shock conflict. For example, if a woman receives a distressing phone call from the hospital that her child was in a bad accident, the breast duct cells turn on to help that child (even in an 80-year-old mother). (Cell plus brain stem)

As soon as the conflict is resolved, let's say, the child is released from the hospital, the tumor immediately stops growing. Since the child is out of danger, there is no longer a need to produce extra breast gland cells. During the [healing phase](#), the now superfluous cells are broken down with the help of [mycobacteria](#) that have been trained to do exactly that. If the repair phase is not interrupted, for example, ending up on a track, (the child has to return to the hospital), the tumor will be completely removed with the completion of the healing process (recovery). (See article: [Breast Cancer](#) on the website [www.learninggnm.com](http://www.learninggnm.com)).

## *What happens in the conflict active phase sympathicotonia?*

- This is the Sympathetic Dominant Phase. The body goes into protection and action.
- The body or body parts are cold: fingers, toes, lips, nose.
- Insomnia or night waking
- Low or no urine output
- Constant “remunerating”
- Low blood sugar
- Loss of appetite
- Spike in blood pressure
- Uneasiness/Unrest

Then when the psyche resolves it – Conflict Lysis (CL)

- Fever
- Deep Infection (at its worst)
- Coughs
- Diarrhea
- Vomiting

What happens after the resolution of the conflict? The body is in healing crisis.

- Body parts heat up
- Swelling
- Pain
- Fatigue, wants sleep
- Night sweats
- Headaches
- May have discharge



- Urine flow starts
- Rest and Recovery

## *PREMISE*

The brain will make a “survival program” to protect the body from unprepared shocks that the psyche experiences. This includes feelings of being “knocked off track” or “knocked down and out,” feelings that throw us “curve balls” that were totally unexpected. This event causes a deep response as the body reacts physiologically: first, we react by being upset, vomiting, stressed, developing headaches, etc. After some time, we believe we are “over” the stress. However, underlying this first response is a second and deeper response/reaction/result (R3 - the SBs biological program) that will eventually **HAVE TO BE RESOLVED** in order to release the impact it had on the deeper nervous system. Think of a dog that has to shake off the water after it swims in the lake. It **HAS** to shake off the water, because it knows inherently that the water, if there is too much, could cause the dog to become too cold and potentially die. The reaction to the water is an instinct and difficult to overcome. SBS is like an instinct as well. SBS reactions are **PURPOSEFUL**, with the attempt for the body to help the person meet a survival or purpose goal. If there was a goal to have a baby, and the baby was lost, the most perfect solution is to “fashion” a baby, and this is known as a teratoma. This fashioning has a 9-month period that is actually a tumor simulating baby growth. At that time, it has to be removed by surgery, yet the body did its work for the mother, by making a baby for her.

German New Medicine understands the body is a unified organism, a unity, with the psyche being the integrator of all functions of behavior and all areas of conflict, and the brain being the main computer of all behavioral functions, conflict areas, organs, and the sum of the consequences of all these events.

The founder of New Medicine, Dr. Ryke Geerd Hamer, assigned the term DHS (Dirk Hamer Syndrome— named for his son) to an isolating shock that is **very difficult, highly acute, and dramatic**, often resulting in cancer or other cancer-like diseases. Shock is experienced simultaneously on three levels: the psyche, the brain, and the organ. The deeper, more complete the loss or surprise, the worse the physiological impact.

Dr. Hamer called edema in the brain that forms as a result of an emotional shock a **HAMERSHERD (HH)**. This is referred to as a “program.” DHS triggers a program of the organism in times of emergency and shock. The location in the brain is determined by the content of the conflict caused by DHS based on the meaning of the event determined by the psyche. One shock is often accompanied with

another shock or associated with "imprints" of the situations. Hamer called these "imprints" **track**

**Tracks** - the imprint of the conflict and accompanying circumstances experienced through a DHS. Tracks (doubling up on the same DHS) remind us of the shock or trigger the thought patterns of the circumstances of the original shock and often are not resolved. Left unresolved, they have a way of stacking on top of each other like a "broken record" unable to move past the event, playing a loop on a record over and over.

An example of a track is a woman holding a cat while the phone rings. She receives the shock of bad news of a relative passing away. The shock creates a separation conflict from the relative passing and creates two tracks. The first track is a cat "allergy." The second track is the telephone (imprint). Every time she holds the receiver to her ear, she relives the shocking experience (or worries that she might). Until resolved, the cat and phone can trigger an SBS.

Tracks have the potential to either postpone healing or create a hanging healing in which she goes into healing phase (away from cats) but is brought back to a conflict anytime she touches the receiver in anticipation of the "bad news" coming.

Dr. Hamer gives this example of a track in his summary of the New Medicine:

While on a flight from Senegal to Brussels, a gentleman suffered a heart infraction. Because of the limited ability to do anything at the time, the wife suffered a death fright conflict for her husband who could have died at any moment. Though he quickly recovered upon his return to Brussels, his wife became ill off and on with a solitary lung-nodule conflicts causing her to perspire heavily (created by the tubercular bacteria). The sweating lasted for days, turning into weeks when the tumor would be finally broken down.

Because the wife experienced a DHS at the time of her husband's heart infraction and became ill from the panic, she repeated the experienced any time a family member boarded a plane. Though it was unlikely any of her family members would also experience a heart infraction, the plane became a track connected to death fright, creating a conflict-complex situation where the wife would suffer a recurrence of a solitary lung nodule infection every time a family member boarded a plane. The wife no longer experienced symptoms when the family stopped communicating their airline travel plans to her. This kept her from resolving the conflict, but at the same time, it kept her from being sick every time someone flew on an airplane.



## *Laws of German New Medicine* Ryke Geerd Hamer, M.D.

**LAW 1:** Every disease originates from a shock that the body is not prepared for.

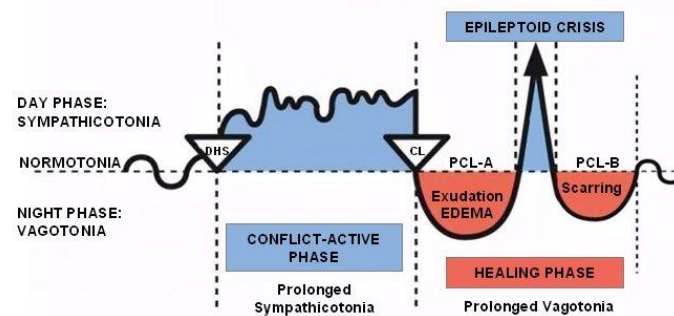
**LAW 2:** There are two phases of this shock that must be expressed.

**LAW 3:** The brain mediates between the psyche and the body.

**LAW 4:** The microbes in the body help the body heal this psyche-brain-body expression. There are three brain levels that control the body. Each area of the brain evolved differently and uses different microbes.

**LAW 5:** The reactions of the brain-body are a natural healing reaction. They are a program that helps the organism survive and is a coping device that has evolved over thousands of years.

### G N M BIOLOGICAL SPECIAL PROGRAMS - TWO-PHASE PATTERN



DHS (Dirk Hamer Syndrome) – Biological Conflict  
CL (Conflictolysis) – Conflict Resolution  
PCL (Post-Conflictolysis) – Healing Phase

© Dr. med. Mag. theol. Ryke Geerd Hamer

## *The HH in the CA-phase and the PCL phase*

- HH is organ relay that forms through a DHS. It has a sharply-defined “target” configuration during the CA-phase. Rings edematize during the PCL-phase.
- The target configuration in the conflict-active phase has been misinterpreted for a long time as equipment error or artifact. This controversy was put to an end with the signing of a protocol with Siemens and is now fact; a target configuration means there is a conflict-active phase in a specific relay, or group of relays, in the brain.
- Clear HHs are a result of the work by the body to repair the HH and are grounds for relief, not further shock, and certainly not for surgery on the brain.

Often the brain and the organs have target formations in simultaneous correspondence, and the target configuration on the organ has a specific development.

Three things happen at conflict resolution (PCL):

Cerebrally: edematize dissolution of the HH from the CA-phase (edema rings, intra- and perifocal edema of the HH)

Psychically: the conflict is no longer an issue

Organically: a new, healthy growth in organs controlled by cerebrum and cerebella medulla. Tumor disintegration in organs controlled by old brain (this will not occur if the body lacks the necessary microbes).

## *REVIEW:*

**PCL-phase (post-conflictolytic phase)** - beginning in the conflictolysis and ending with re-normalization. The epileptic or epileptoid crisis occurs here.

**DHS**- balance of the autonomic nervous system disrupted at the beginning of an illness so that the organism swings into sympathetic overload.

**CL** - (Hamer's term, conflictolysis) is the conflict's resolution. It is the beginning of the healing phase.

**EC** - epileptic or epileptoid crisis, at the apex of the healing phase. It occurs in the middle of the healing phase and is a necessary conflict-relapse where the patient again experiences, in compressed time, the entire biological conflict of the conflict-active phase. This is the brain's attempt to push out the edema in the brain and re-normalize. Diuresis occurs here, eliminating the body of all the excess water it has stored.

## *The Law of the Two Phases of Diseases*

- CL is interrupted by the epileptic or epileptoid crisis that marks the turning point of the healing-phase.
- All diseases follow this course as long as there is conflict resolution. The illness will be two-phased if there is conflict resolution.
- If there is no CL, two other scenarios are possible:
  1. With acute conflict activity, the disease may be mortal and end in cachexia.
  2. The body reduces the severity of the conflict, possibly by accommodating it, thereby lowering it and making it less intense.

### *Two further possibilities may occur if the conflict recurs:*

1. Chronically recurring conflict activity caused by predominant conflict activity that is resolved by small or short healing phases.
  2. Resolution is never reached because there is always some recurrence before final resolution; known as a "hanging healing." Parkinson's disease is a good example of this as the tremor is the healing of a motor conflict in the musculature of the hand. The body heals for most of the day, but a very brief dream about the conflict at night can interrupt the healing phase.
- There are combinations of possibilities (known as syndromes), all dependent on the psychological ups and downs in the soul of the patient.
  - Combinations occur within conflicts and conflict-events and when several conflicts co-exist at different points in their phases. There can be two or three conflicts hitting the brain hemisphere at the same time from the same DHS but from different points.
  - It is possible to have two active conflicts at the same time; one is in conflict activity and another in resolution. The result is mixed innervation - half sympathicotonic, half vagotonic, and leading to further complications.

**Example:** If a female patient has a fear-revulsion conflict in the left glucose center with another active conflict in the right cerebral hemisphere that has just gone into resolution, she has a continuing hypoglycemia together with vagotony, meaning she will eat large amounts of food and become obese.

## *The Ontogenetic System of Tumors and Cancer-Equivalent Diseases*

- There are three embryonic layers that are similar to one another and describe different types of histological tissue.
  - **Inner germ layer:** Cessation of cancer-growth, encapsulation or destruction by fungi or mycobacteria, affinity for fungal infections/ Tuberculosis
  - **Middle germ layer:** Cerebellar-mesoderm (growth-stops, encapsulation, or destruction by bacteria) and Cerebral-medulla-mesoderm (regeneration with swelling and excessive growth that is totally harmless). The bacteria are helpful in rebuilding. Includes mycobacterial infections.
  - **Outer germ layer:** Ulcer-necroses tend to fill with reconstruction or scar reconstruction with help from viruses, includes intellectual conflicts.

## *The Ontogenetic System of Microbes*

- Microbes correspond to their ontogenetic age with fungi being the oldest, bacteria, and viruses (the youngest).
- Microbes become active only in the healing phase beginning with the conflictolysis and ending at the completion of the healing phase. Prior to and following the healing phase, the microbes exist as apathogenic and are considered virulent germs during the healing phase.
- Healing will occur even without special microbes but not to the biological optimum.
- Suppressing tuberculosis has prevented natural breast and intestinal tumor destruction.
- Induce tubercular infection if one has not already begun.
  - Surgery may be appropriate if progression has well advanced without tubercular infection.

We were not able to understand disease prior to understanding these laws. Removing the physical mass of cancer is ineffective. It is important to understand that microbes are not aggressors but in fact, helpers that heal. The healing phase can be more dangerous than the CA-phase in some diseases.



## *METASTASES*

- It is common practice to think that cancerous cells spread and "move" to new locations. These local foci are known as "proximal metastases." If a corresponding HH is found in the brain, they are called "distant metastases," a result of the assumption that the cancer cells travel to the brain via the blood.
- There are, in fact, no "metastases" but only secondary, tertiary, etc., carcinomas. For this reason, "benign" and "malignant" are terms not used in New Medicine.

Here's how a metastasis may typically happen:

The patient suffers an emotional shock from her husband suddenly leaving her. The patient has a growth medically known as cancer. We understand the growth to be part of healing process due to emotional shock. She is told by the doctor that her breast has to be removed due to the danger of the malignant cells spreading or "swimming" through the blood, generating a "distant metastasis."

The diagnosis scares the patient (**lung bronchia**); she gets a disfigurement conflict (**post-surgical**), and a melanoma in the surgical scar from the excised breast (**separation**). This happens after she tries on clothes and they do not fit because of the disfigurement of the missing breast. Next, she develops a self-devaluation conflict when she feels useless, losing the use of that breast (**bone**). This may be a rib osteolysis. She also feels that the operation "attacked" her and develops a pleura-mesothelioma of the lung pleura (**defense**). She suffers a death fright as her condition worsens and develops a pulmonary adenocarcinoma.

### *REVIEW:*

**Separation Conflict**- Ulcerated Duct Cancer

**Disfigurement Conflict** - Melanoma in the surgical scar of her previous left breast

**Self-devaluation Conflict** - Rib osteolysis in the area of the left amputated breast

**Attack Conflict** - Pleura-mesothelioma of the left pleura; conflict against the left breast area

**Death Fright Conflict** - Pulmonary circular foci (adenocarcinoma) above

Because fear is a contributor to DHS, New Medicine provides the patient with hope and a prognosis that is neither frightening or terrible and does not result in further conflict-shock. Patients go into further shock when



told by their doctor that, "There is nothing we can do," and "You are going to die" (prognosis).

Hamer's term "**Vicious Cycle/Devil's Circle**" is a mechanism of recurring and new successive conflict in combination with psychic self-build-up caused by doctors creating panic (or panic in general).

- Be careful in GNM knowing that every word is delicate and can precipitate a new conflict.
- Nature does not make mistakes and seeks for only meaningful, goal-oriented solutions.

We need only to understand the process even when it may seem incomprehensible or bad.

Observe how the mental-emotional conflicts and loops caused the symptoms once they concluded.

## *Working with the Biological Laws*

- **Key:** Precisely determine when the DHS was established and the accompanying circumstances.
- A CT scan is most appropriate, not an MRI, unless the patient is in the PCL-phase. An MRI shows accumulations of glia and edema very clearly. A CT will do this just as well for a professional.
- Know the mass of the conflict and be clear on the feasibility of resolution of the conflict before making rash diagnoses or prognoses, i.e., give up job, sell company, divorce, etc.
- There is a responsibility in Bionetic Naturopathic counseling to assist the patient through the PCL phase as there can be conflict resolution, just as a physician should use the medical means at his or her disposal to help the patient. In the PCL-phase, the patient must be convinced that the current symptoms are not as bad as they seem and are in fact welcome—symptomatic therapeutic relief.
- A new understanding of microbes causes us to rethink previous doses based on standard practice, i.e., cortisone therapy, which can cause edema to progress particularly in the brain.
- Though a Bionetic Nutritional Counselor understands that Mother Nature has optimized all developments, he/she is not opposed to supporting **tissue release processes**.



- The Bionetic Nutritional Counselor must understand the inner workings of the patient's dis-ease.
- A patient's thinking, especially in active fear, makes it is difficult to provide German New Medicine concepts. In GNM supported clinics, the "fear from a systemic disease" would not exist.
- An individual must reach resolution within a certain amount of time to avoid the possibility of downgrading the conflict and survive with a hanging conflict.

## *The Biological Conflict in the Embryonic Phase*

- Biological conflict that bypasses the mother
- Mother panics, causing the supply to the placenta to close, thereby starving the child.
- Intense fear by the mother during pregnancy
- Extreme fear by the mother during pregnancy results in fish seafood allergies.
- Intense sounds or shock waves of sound
- If the mother suffers conflict, it will remain on hold as the pregnancy takes absolute precedence.
- This changes if the child in the womb enters the CA-phase, at which point it will abort itself (commit suicide).
- Birth Traumas
  - Forceps
  - Stuck in the birth canal
  - C-section
  - Trauma cutting the cord
  - Jaundice
  - Circumcision
  - Vaccinations
- Need for Bonding with Mother
  - Removed from mother prematurely
  - Skin to skin time with mom's heartbeat
  - Not breast feeding



## *Reference*

Summary of the New Medicine; Hamer, Dr. Med. Ryke Geerd; AMICI DI DIRK;  
August  
2000; E-Fuengirola, Spain.